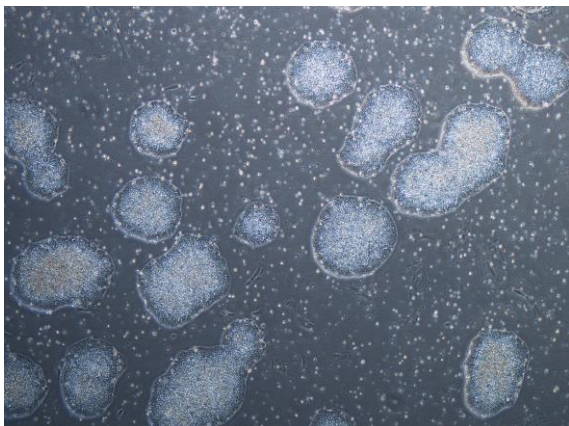
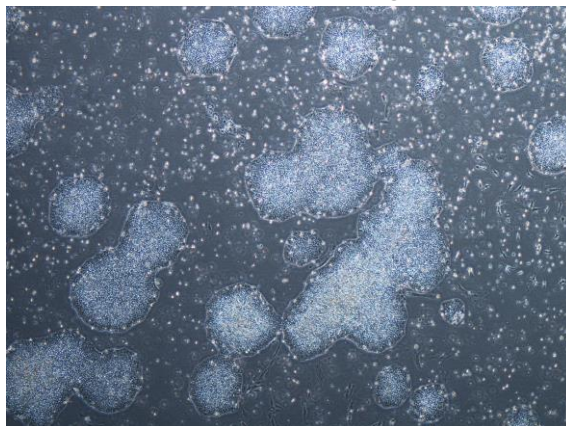


【 CiRA-j-1172 】 Morphology of iPSC colonies

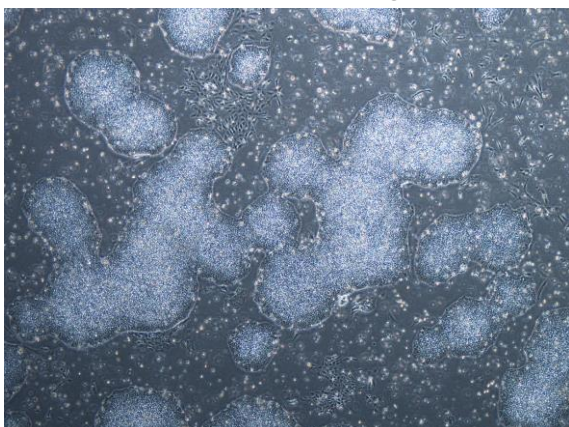
CiRA-j-1172-A: passage-2



CiRA-j-1172-B: passage-2



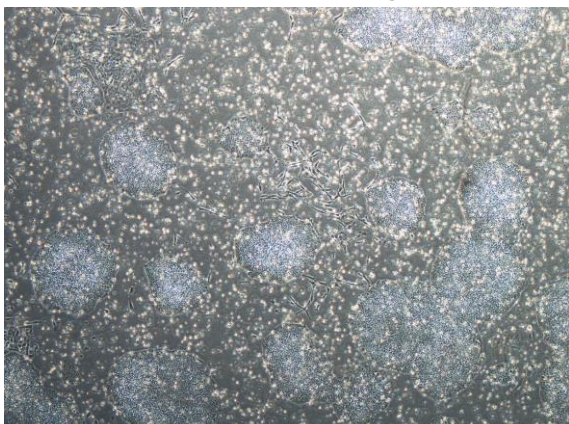
CiRA-j-1172-C: passage-2



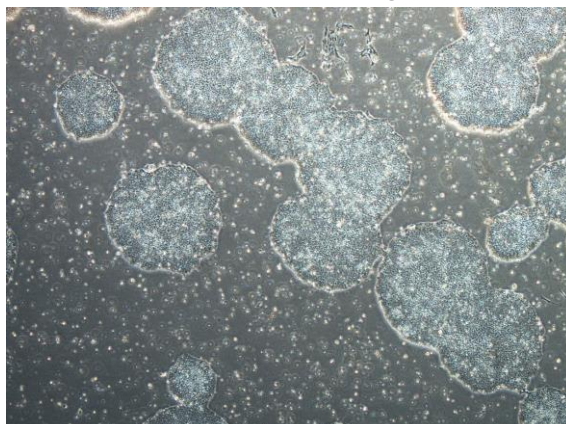
CiRA-j-1172-D: passage-2



CiRA-j-1172-E: passage-2



CiRA-j-1172-F: passage-2



(All images were captured at 4x magnification)